



A Corporate Summary

INTRODUCTION

For over 20 years, Resin Building Products has developed an extensive catalogue of resin-based building products for a broad range of applications.

Our focus on customer satisfaction and the quality of our materials ensures that the service we provide to our customers is unrivalled.

We believe it is important to have long-lasting relationships with our customers and this is reflected in the quality of our products.

All our products - from resin-based flooring to our protection and repair systems - have been fully developed by our in-house technical team. This ensures that we can provide full and unparalleled technical support on your project.

Our products have been instrumental in award-winning projects all over the world and will be featured in many more due to our continuing development of materials and systems that are at the forefront of the resin industry.

Regardless of which product you choose, whether it's one of our Epoxy or MMA resin-based coatings, sealers, screeds, mortars or adhesives, you can be confident that our products and service to you will be up to the task.



RESIN FLOORING - INDUSTRIAL

Durable solutions for industrial applications

It is essential to choose the correct floor finish for an industrial environment to minimise down-time and disruption to production.

Our range of resin systems are suited for applications in most industrial environments.

Our resin-based coatings may be applied to floors or walls, conferring protective properties to concrete, steel and other substrates.

We also offer specialised coatings for slip and chemical resistant application, having excellent durability together with an aesthetically pleasing finish.

For hard-wearing and high-impact areas, our epoxy screeds provide a highly-durable and easily maintained topping.



RESIN FLOORING - COMMERCIAL

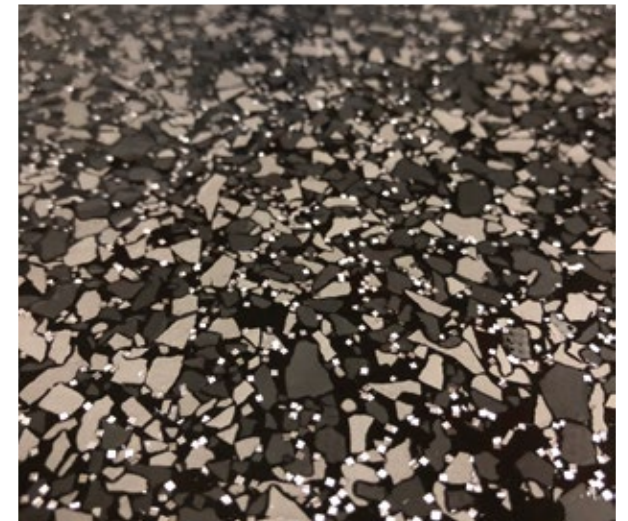
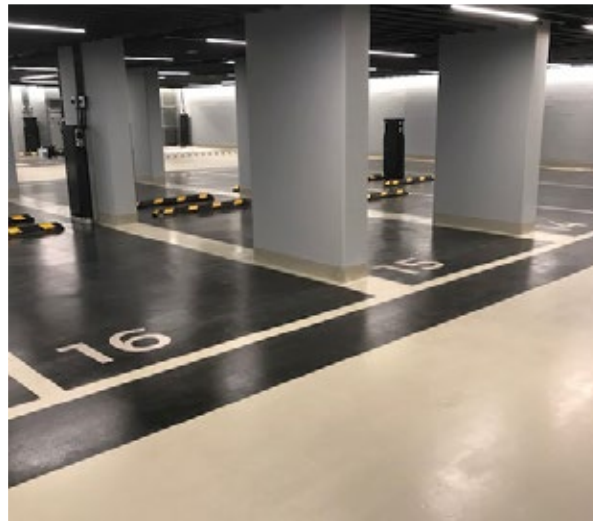
Aesthetic solutions for commercial floors

Design plays an important part in any commercial project so it is essential that your choice in flooring fits in with the overall design of the project.

We offer a range of resin systems that have the same functionality as our industrial applications but with the benefit of being aesthetically pleasing.

Our Epoxy and MMA based resin systems are tailored to individual requirements by combining with coloured aggregates and flakes to create floors that are complementary to the overall design of the area but are also tough and durable.

For projects with demanding timescales, we offer solutions with minimum down-times to create seamless and beautiful floors.



FLOOR REPAIR

Resin based systems for the permanent repair of concrete

We know how unfortunate it is when floors are in need of repair and how important it is that any repair undertaken meets both structural and aesthetic requirements.

Whether it's a localised crack or large-scale floor repair we can tailor a repair system to suit your needs.

From crack injection resins, to colour-matched Epoxy mortar for stone repairs, we provide a full range of resin-based repair systems.

In addition, our elastomeric anti-carbonation coating - Resbuild Anti-Carb - provides a decorative and cost-effective solution to protecting concrete structures from damaging Chlorides, Carbon Dioxide and other acid gases.

If your repair is a floor in a busy distribution centre, a bridge structure or even a century old stone cottage, we have a product suitable to meet your criteria.



SLIP RESISTANCE

Resilient solutions for safety critical areas

Slippery floors present a clear hazard in the workplace, especially in industrial environments and areas used by the general public.

Stringent standards must be met so areas remain safe. Slip resistant surfaces often have requirements to be hygienic and easily cleanable or even possess chemical resistance.

Whatever your overall requirement, we can select from our wide range of products to construct a system that meets the entire design criteria.

Using our range of Epoxy & MMA resin based systems, combined with carefully selected aggregates, we offer a wide range of solutions to prevent slips in the workplace.

We also produce systems for application where slip and skid resistance is of paramount importance, such as footbridges, decking and areas subject to vehicular traffic.

Whatever your requirements are for slip and skid resistance, our systems balance the requirements of a safe surface with function and durability.



CHEMICAL RESISTANCE

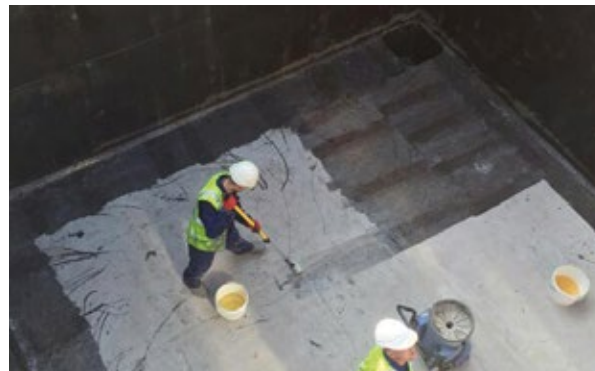
Epoxy systems for bund protection & floors subject to chemical attack

Where required, the protection of surfaces from chemicals is of paramount importance. A system is needed that instills confidence when a chemical breach occurs, so that the protection given by the resin lining provides the opportunity for the spillage to be safely dealt with.

Our range of chemical resistant Epoxy systems - Resbuild Ultra products - are specifically designed for application in environments where chemicals will be present.

Cross-linked Epoxy coatings and resin-rich screeds provide effective solutions to flooring and bund lining applications in the most aggressive of chemical environments, providing long term resistance against chemicals such as 96-99% Sulphuric acid.

Rest assured that our in-house technical team offers specific advice on chemical resistance, ensuring the appropriate system is selected, avoiding over-specification and without compromising safety.



HYGIENIC FLOORING

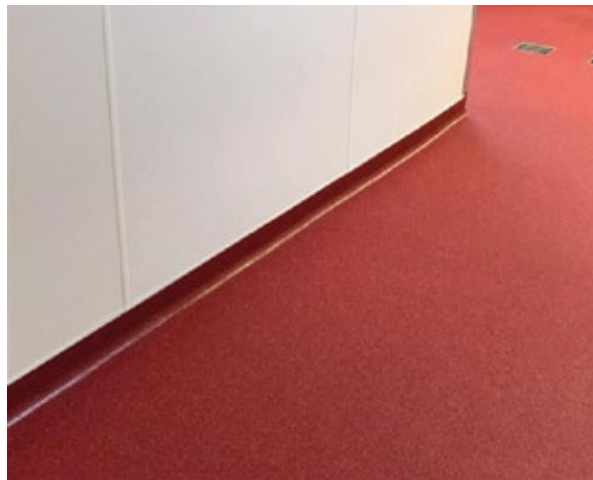
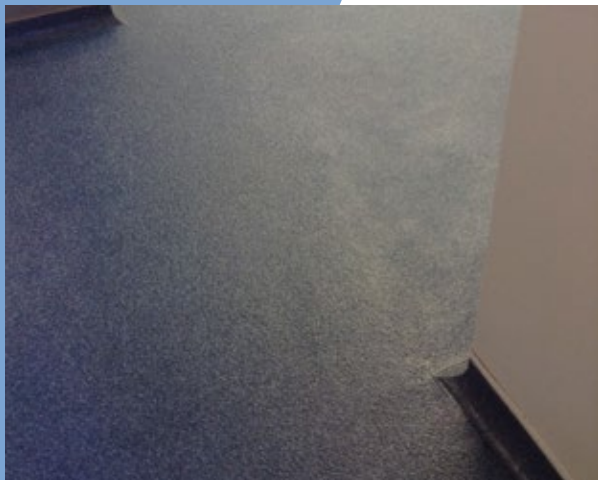
Solvent-free and water-based Epoxy Systems

In food preparation or medical environments it is essential that the Resin systems used are capable of meeting the rigorous cleaning requirements involved.

We offer a comprehensive range of hygienic Resin systems for floor and wall applications, suitable for use in environments that demand safe, durable, and easy to clean finishes.

Our solvent free and water-based Epoxy resin systems offer a cost-effective and robust solution. Easy to apply, these systems can be combined with aggregates to impart slip resistance if required.

Self-smoothing Epoxy systems typically offer excellent cleaning characteristics. Coloured flakes can be combined to provide a more decorative floor with increased slip resistance, ideal for use in the food industry.



FAST CURE

Fast curing resin systems, offering a rapid return to service.

Resbuild MMA flooring are methyl methacrylate-based systems, ideal for use where a rapid return to service is paramount or when multiple site visits are not economic.

Our MMA resin systems offer a diverse range of solutions including hygienic, easily cleanable, abrasion and chemical resistant floor coatings and repair materials for a wide range of applications.

The Resbuild Polyline range includes a self-smoothing screed, coating and sealer that can offer taint-free application and a return to service in 2-4 hours

From smooth, broadcast or trowel quartz systems, our fast curing resin systems can be customised to include a decorative coloured flake or quartz broadcast for added slip resistance.

A hygienic floor with the desired slip and chemical resistance can be achieved within a day and allowed back into service within 2 hours of completion, even at sub-zero temperatures.



LINING & DEMARCATION



Durable resin-based marking systems.

Clear demarcation of safe areas is vital, both in industrial and commercial environments, so whether your requirement is for coloured walkways or lines to identify pathways then we can offer a resin system to meet your needs.

Coloured blocks and lettering on the floor provide clear and unambiguous instructions for operatives in busy distribution warehouses.

We offer a range of systems for lining and demarcation - from solvent free and water-based Epoxy systems that offer a tough and durable taint-free option, to Resbuild MMA systems which enable a rapid return to service in under 2 hours.

Our Resbuild Polyline range also offers the advantage of low odour during application, with a return to service within 2 - 4 hours.



EXTERNAL APPLICATIONS

Hard-wearing and slip-resistant solutions for external areas

External areas that see a lot of traffic need to have a solution which can stand up to the wear-and-tear of heavy use, with the addition of being weatherproof.

We provide a wide range of resin systems suitable for use in external and hard-wearing environments.

Our Epoxy based systems are extremely durable and hard wearing, with excellent adhesion to both concrete

and steel surfaces, making an ideal solution for footbridges, ramps, car parks and loading bays.

Our MMA based products can provide coloured lining and car park bay designation, as well as flexible waterproof coating systems for asphalt, concrete and steel surfaces. All with a return to service in under 2 hours.

Our external resin systems can be customised with aggregates to provide the slip and skid resistance required to provide the safest possible working environment.



 **Resin Building Products Ltd**

Resbuild House,
Unit 4 Durham Lane,
Armthorpe,
Doncaster,
DN3 3FE

 01302 300822

 enquiries@resbuild.co.uk

VAT Number: 656314534 Company Registration: 3047467